

**How to install Secure Shell 3.0 Windows
Client Software and how to transfer files.**

Adolfo E. Cheong

ACIS

City College of New York

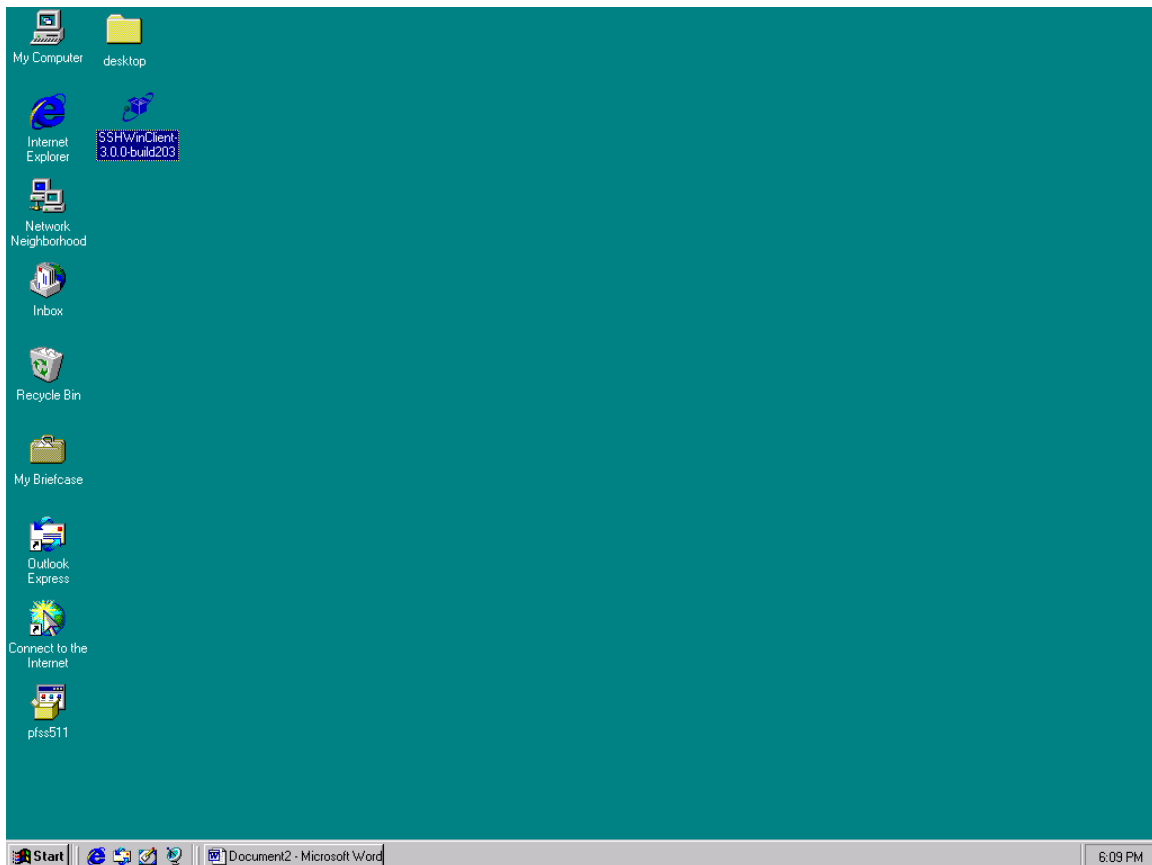
September 10, 2001

How to install SSH

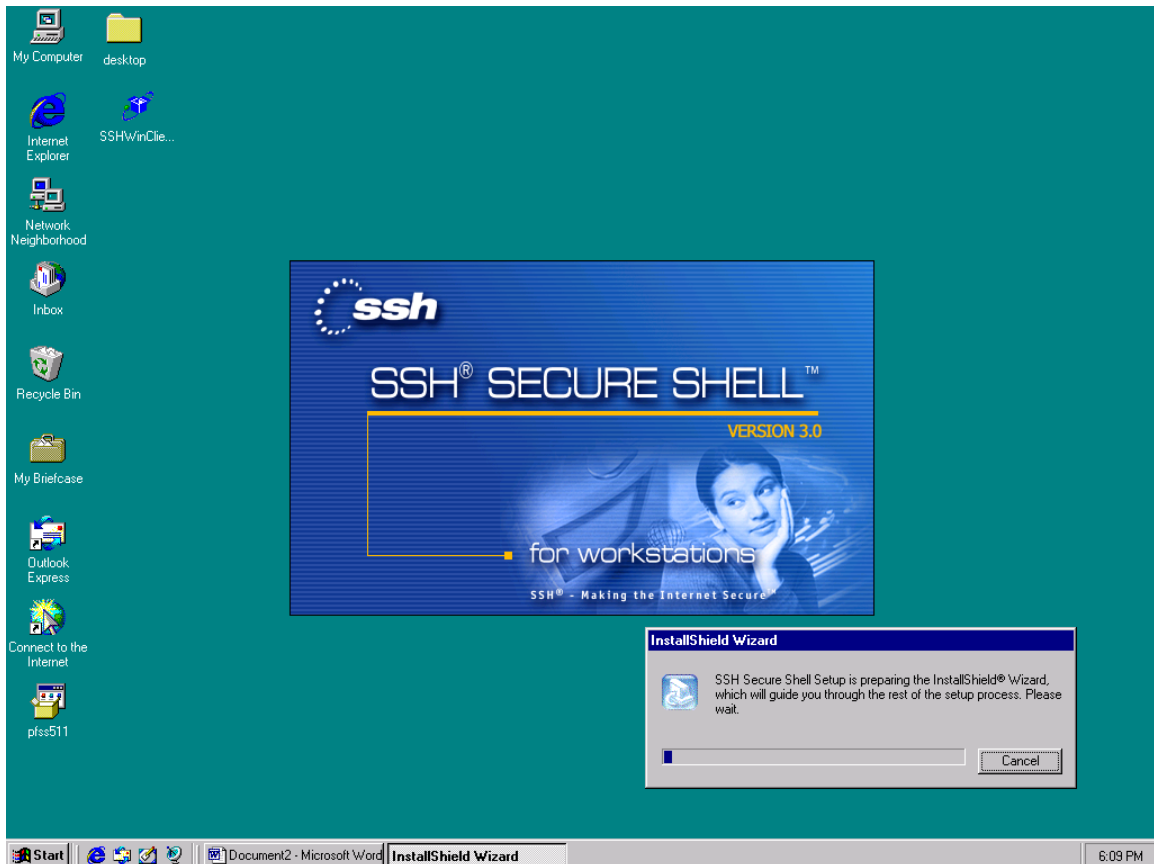
First download the SSH 3 Client software setup file to your computer.

In this case you download the SSH Client software on your desktop.

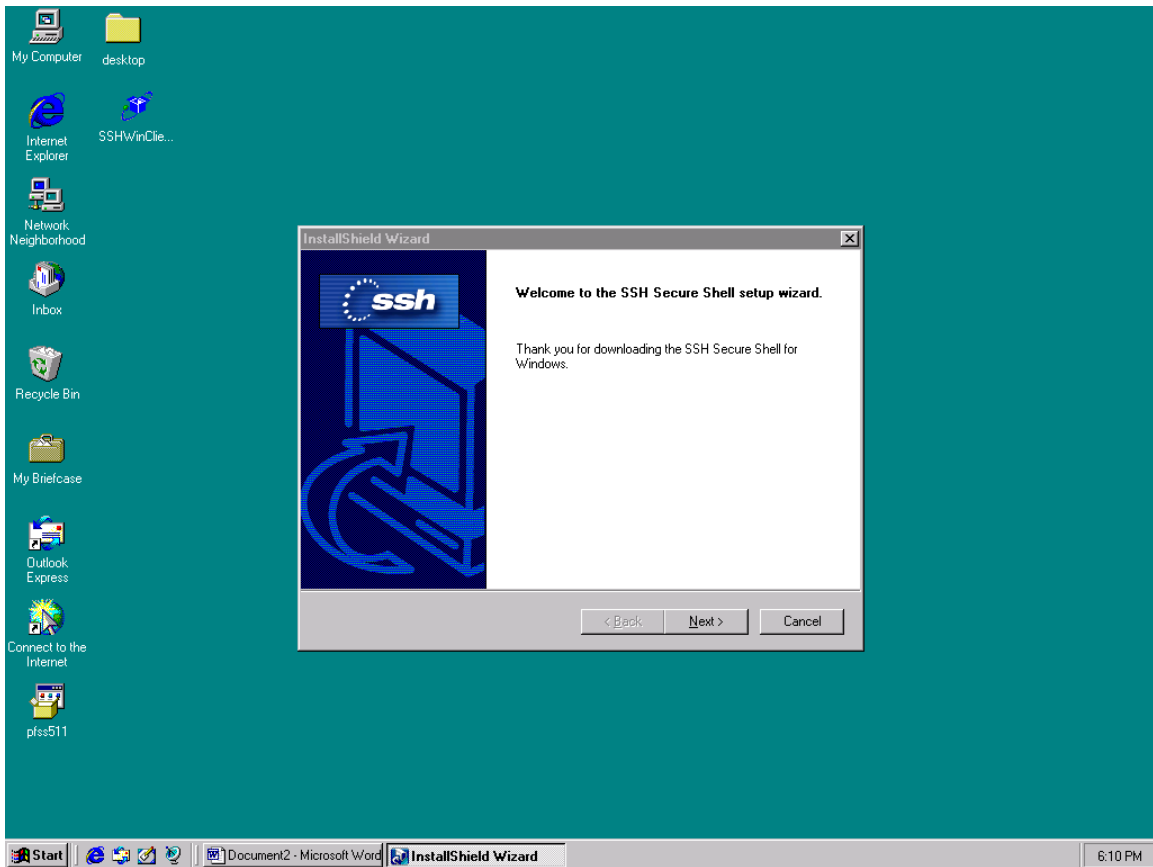
Double click the SSH Client software icon or file name (it is an .exe file).



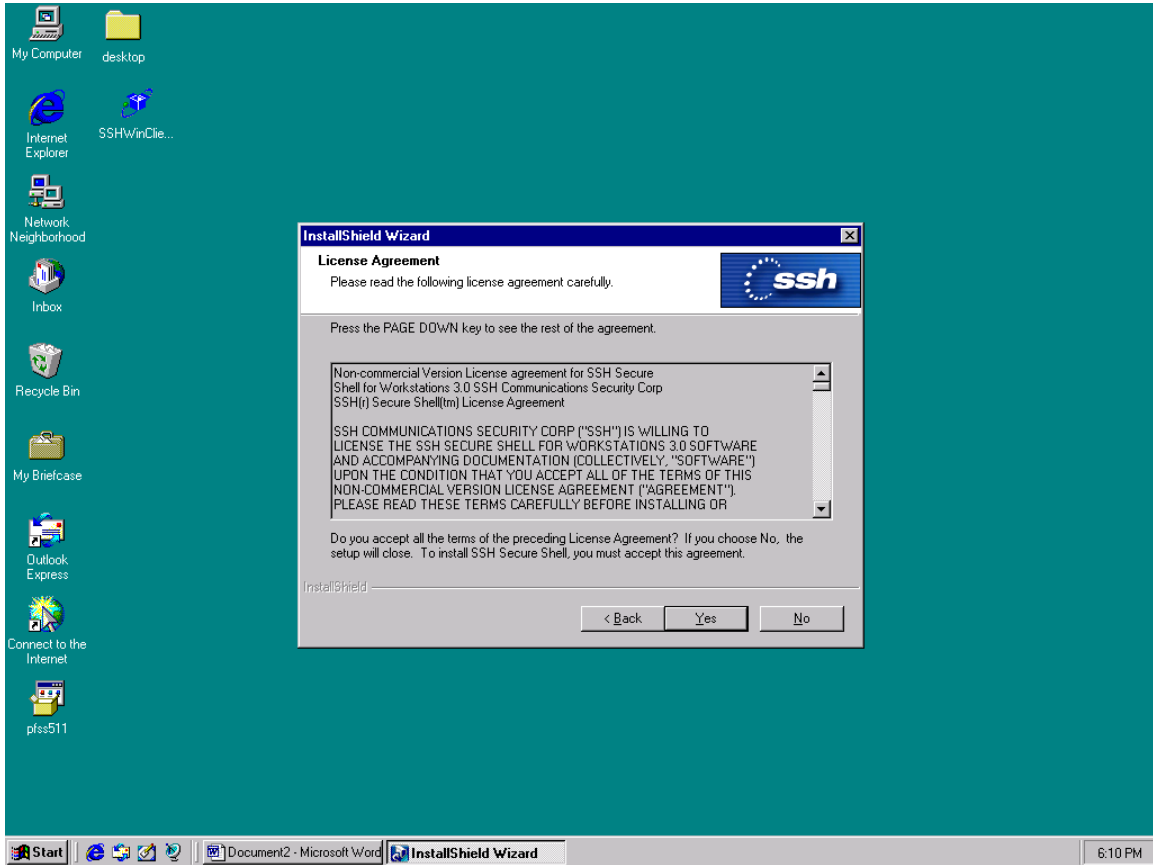
Now it is starting to install the SSH Client software on your machine.



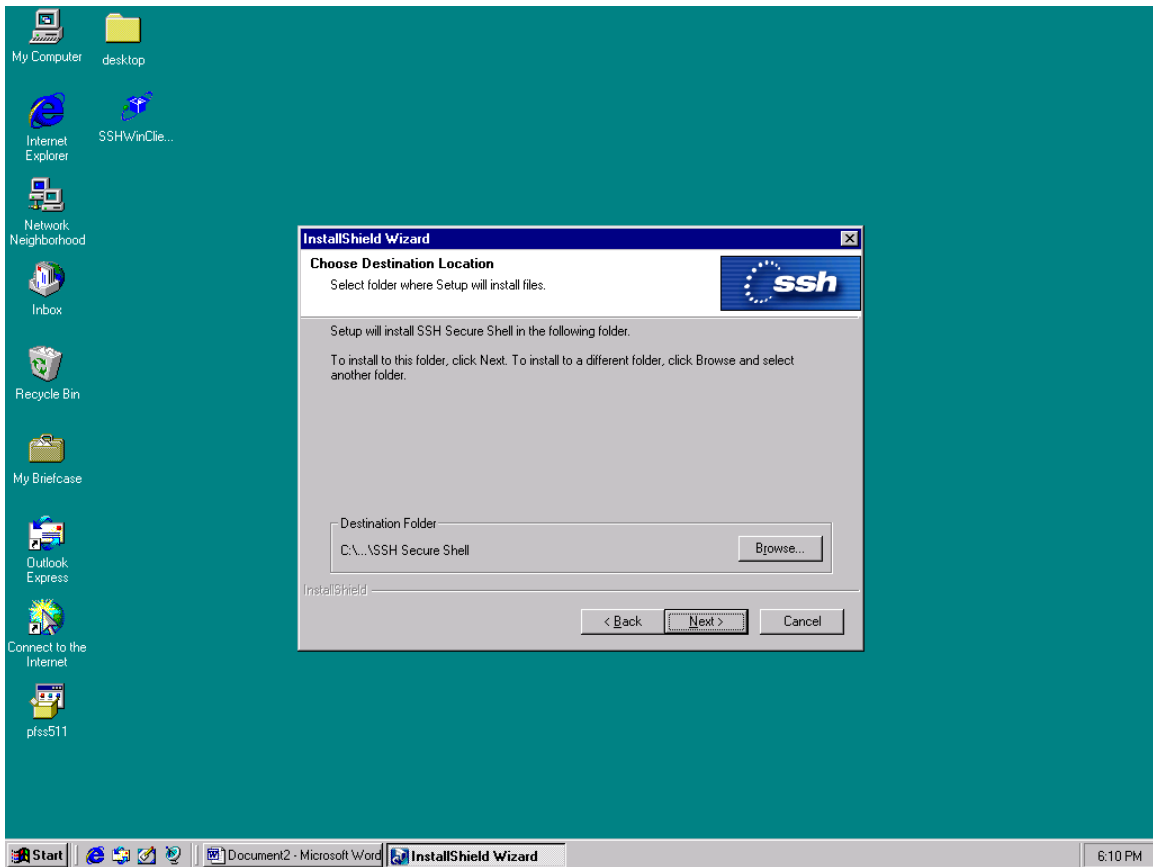
Click on the NEXT button.



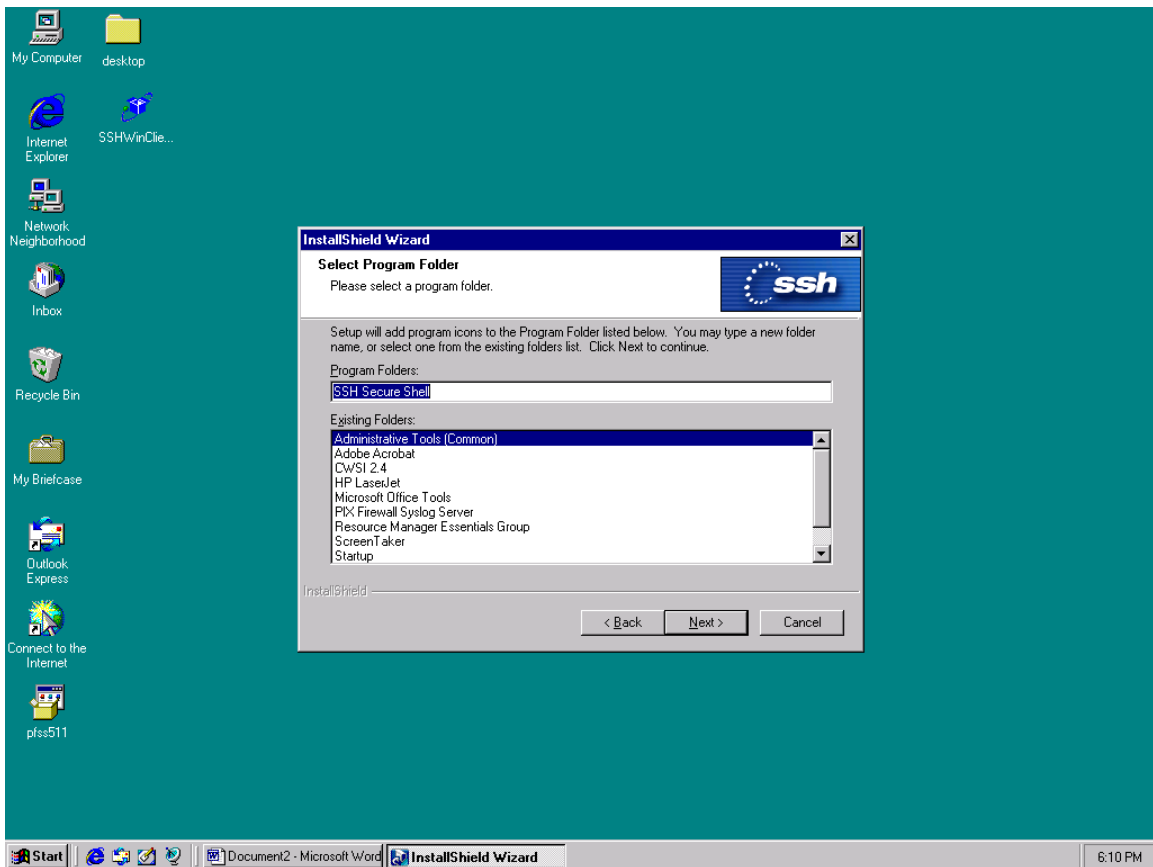
Click on the YES button when you see the license agreement.



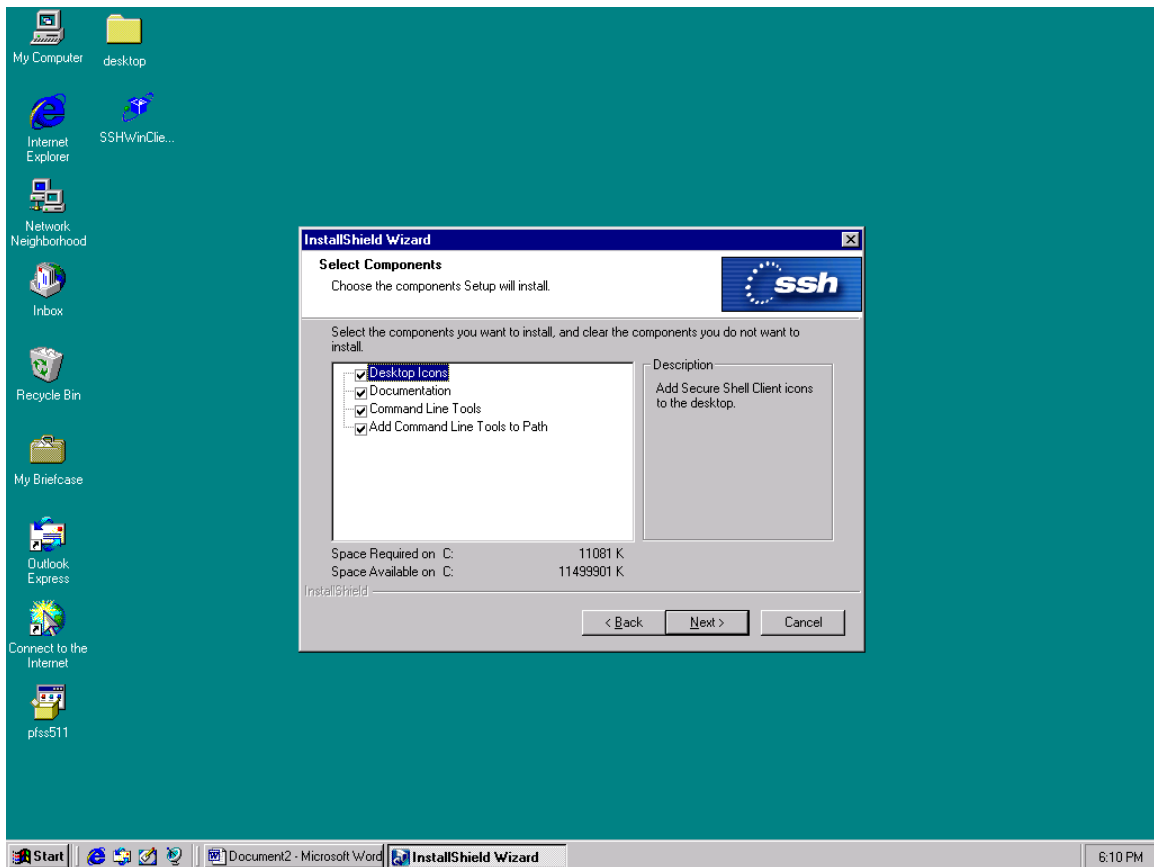
In order to install the SSH to the default destination location just click the NEXT button.



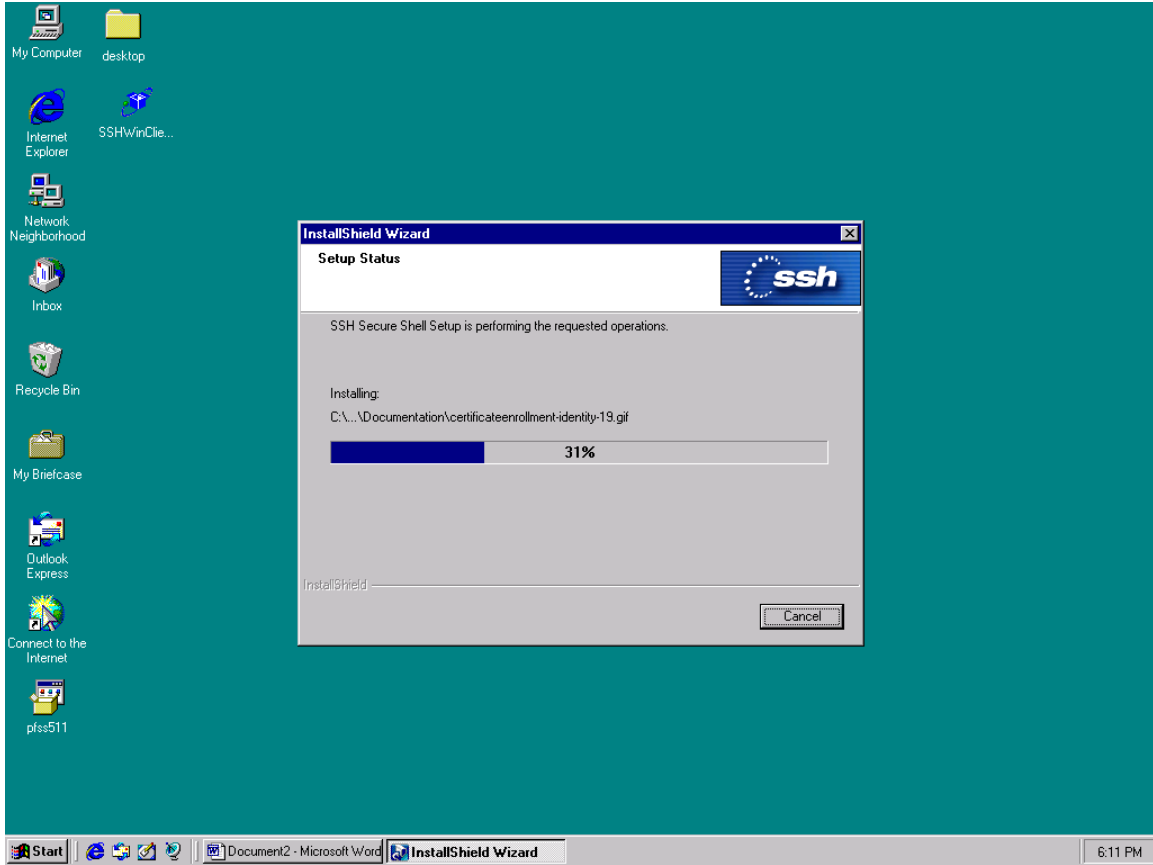
Click on the NEXT button.



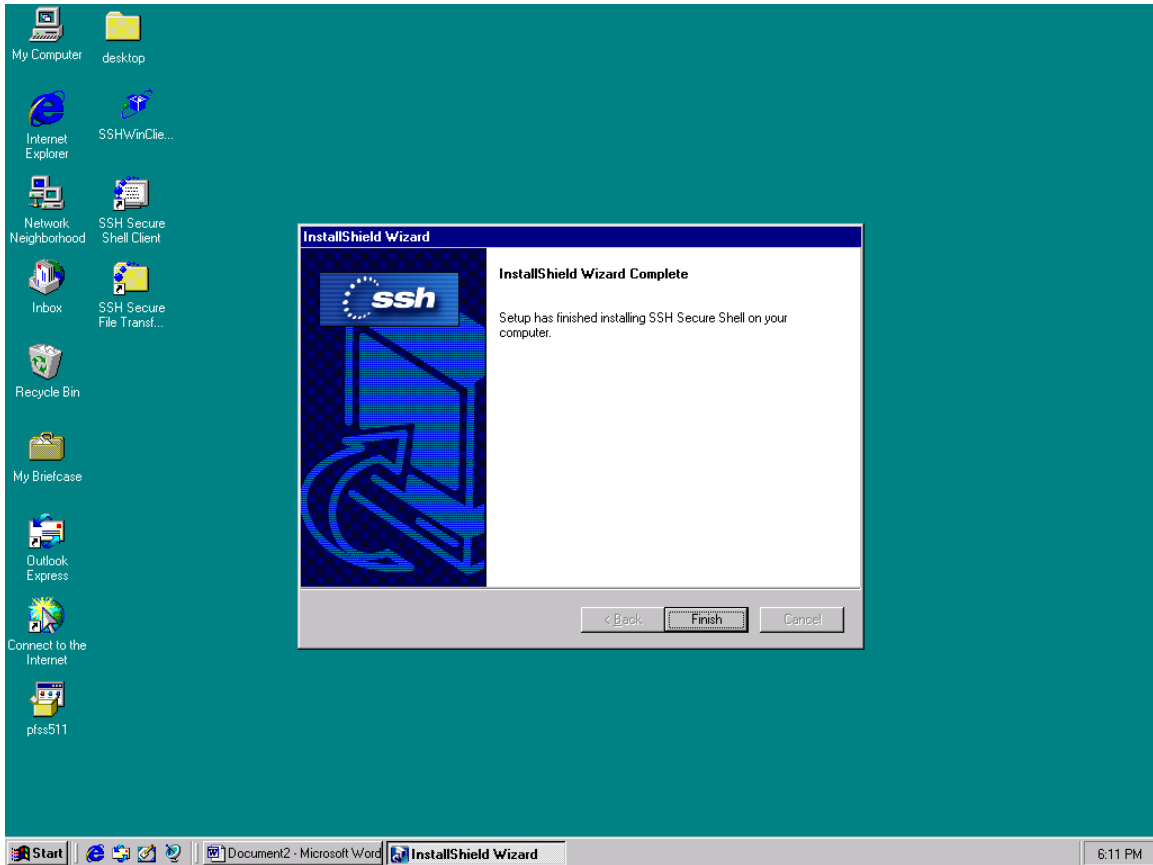
Select all those four items and then click on the NEXT button.



This picture tells that it is installing SSH to your machine.



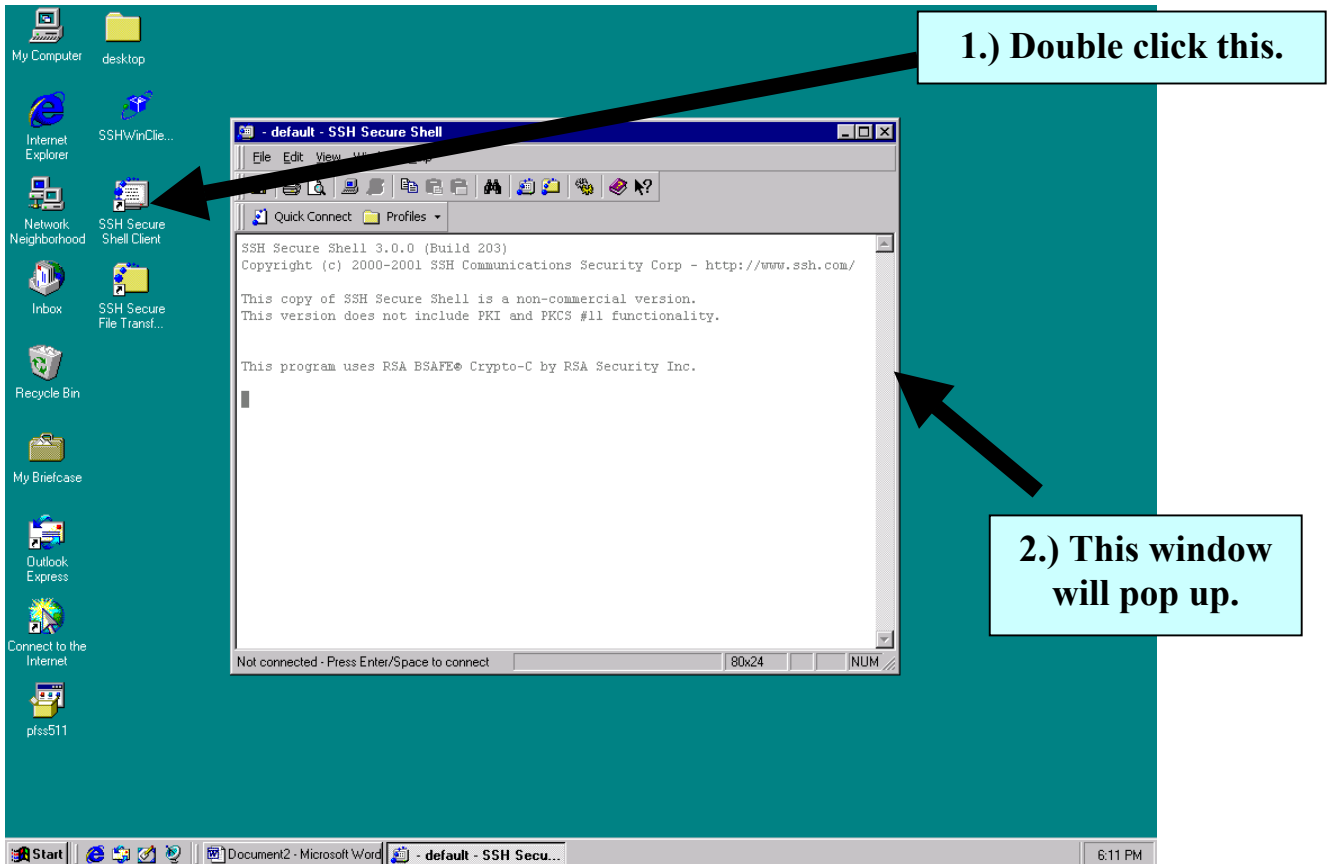
Now, SSH setup is done, click the FINISH to exit this window. It may take a while to get to this point, please be patient.



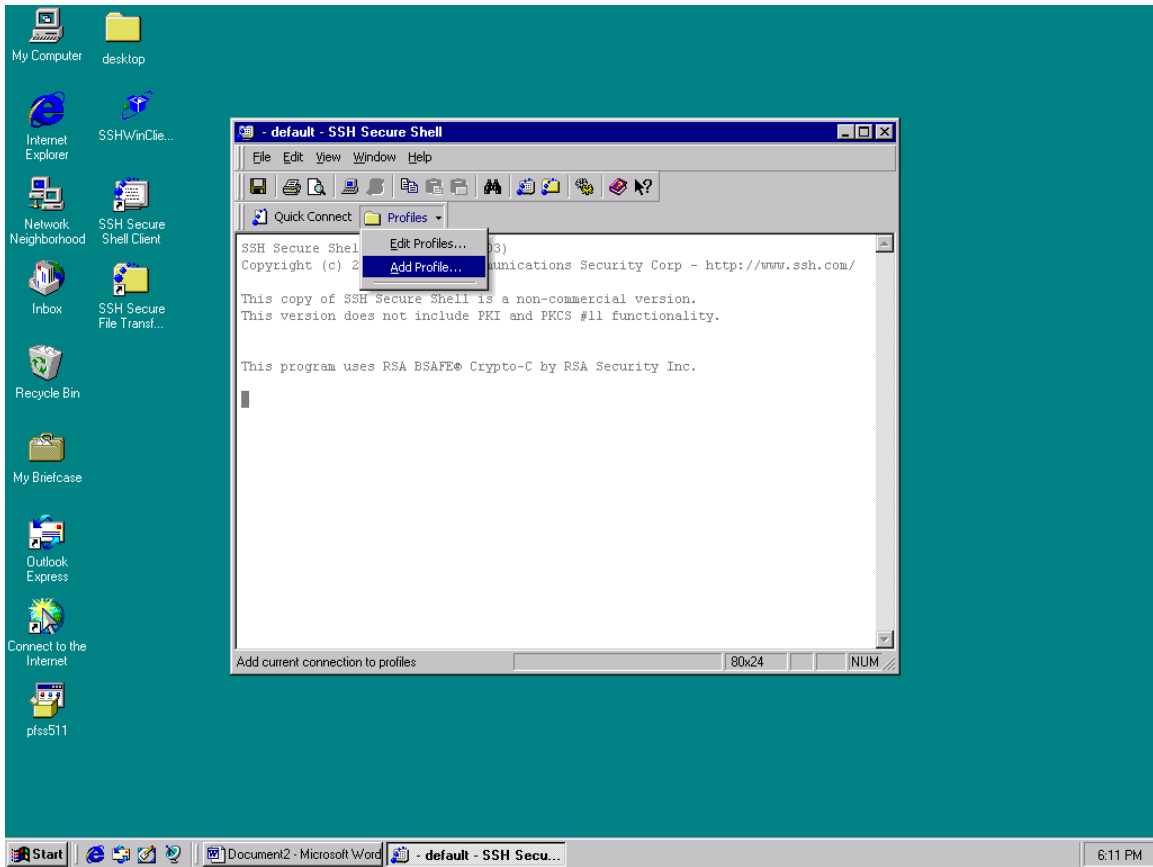
How to use SSH

Setup your profile and login.

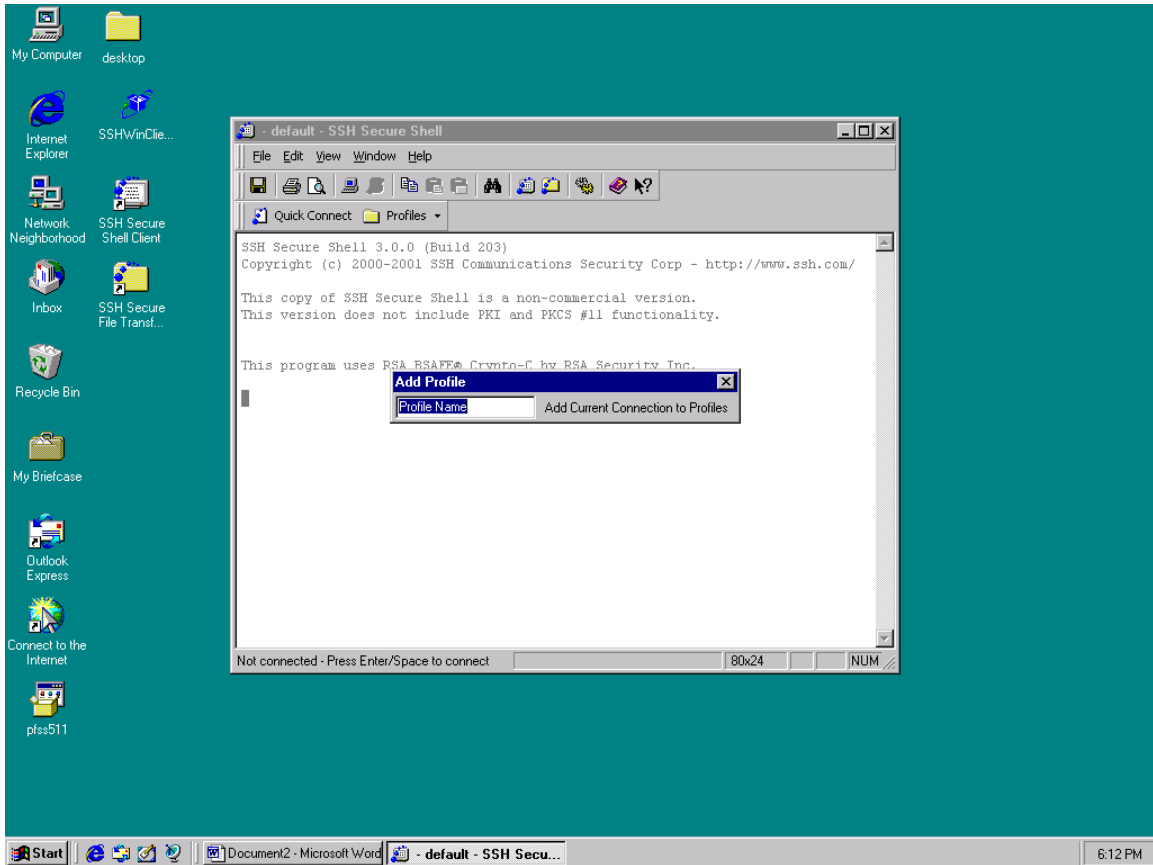
Double click the icon, SSH Secure Shell Client, on your desktop.



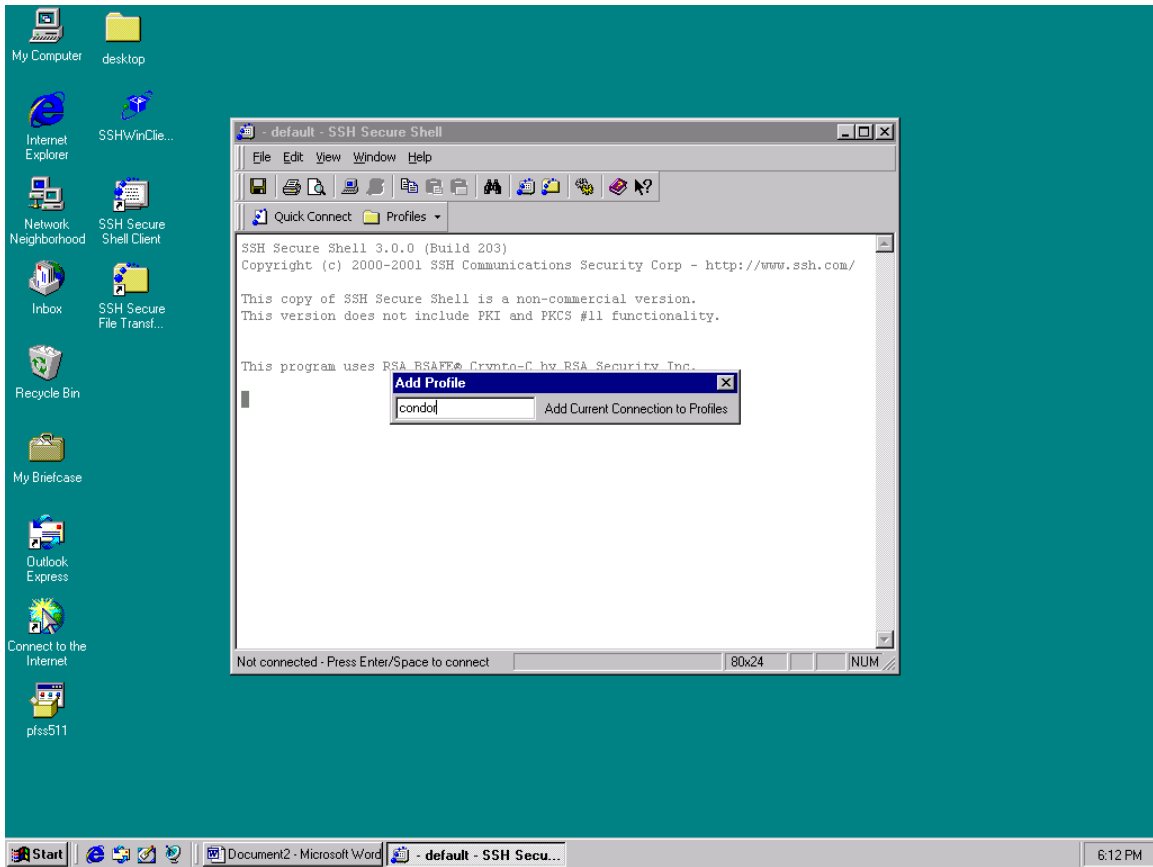
You need to add a profile for each of the connection you make.



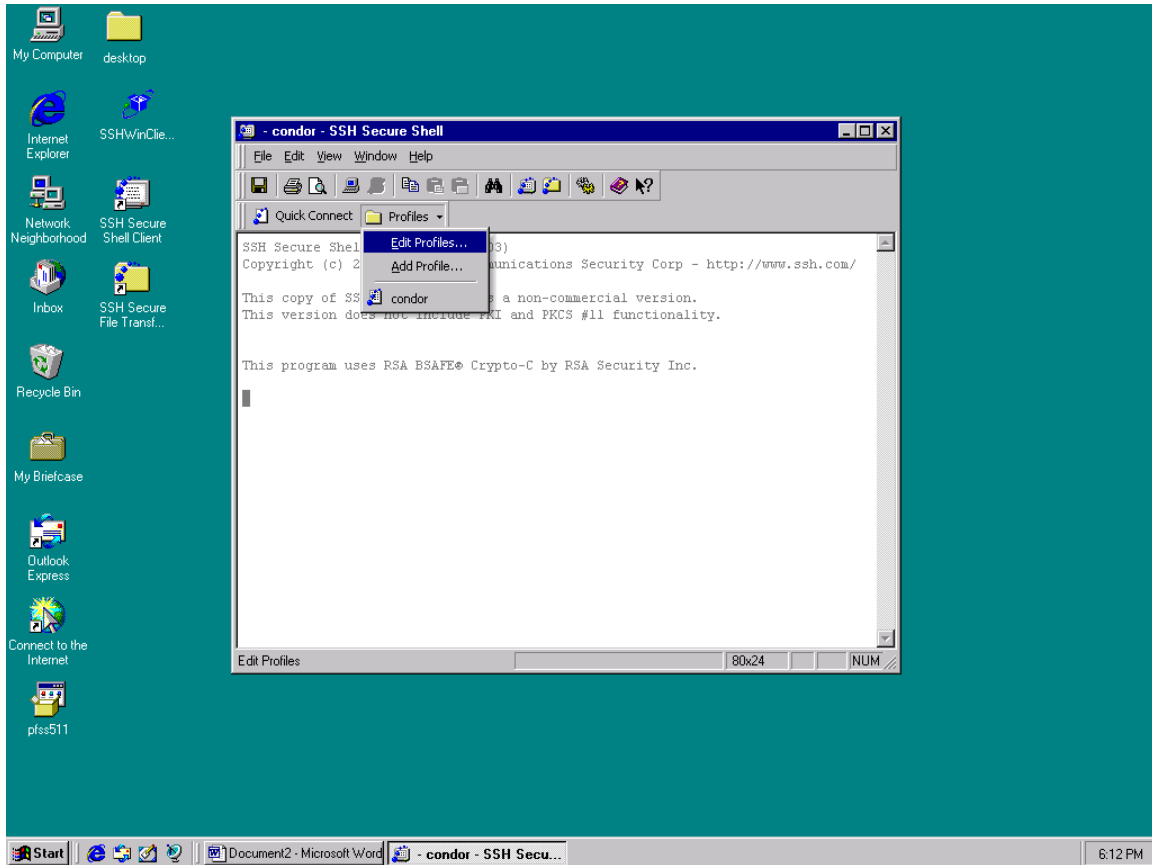
Profile name is usually the server name you want to connect to and maybe also your login name.



In this case our profile name is “condor” since the server name is condor. If you are the user, “John”, on the server, sicsun, you may want to make your profile name as “sicsun – John”. You can have more than one profile exit on your client software.



After you create the profile, you have to edit your profile property before you can connect to the server.



Before you edit the profile property, be sure you look at the left hand side and select the correct profile name.

Host Name: the full server name or the IP address.

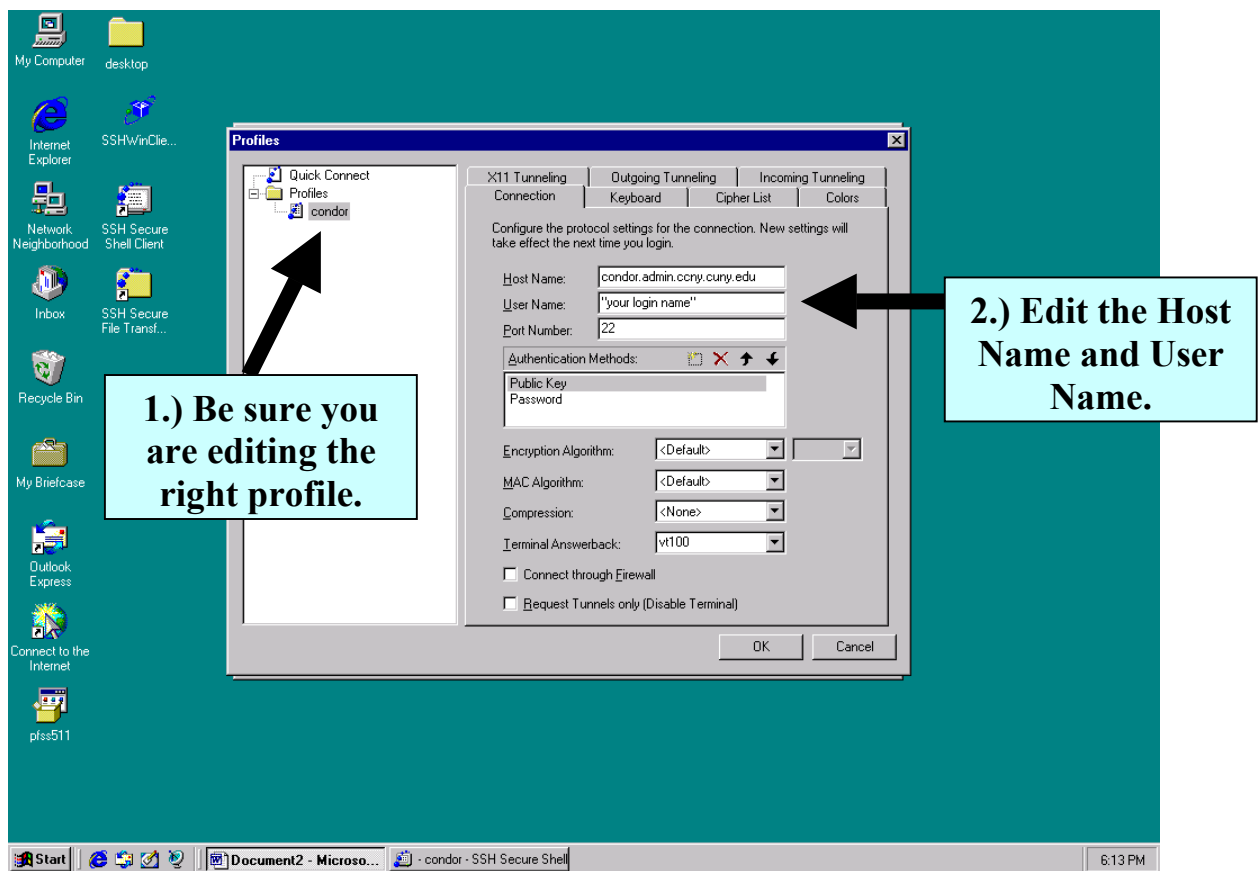
i.e.: condor.admin.ccnyc.cuny.edu OR 134.74.84.6

User Name: the login name you were assigned.

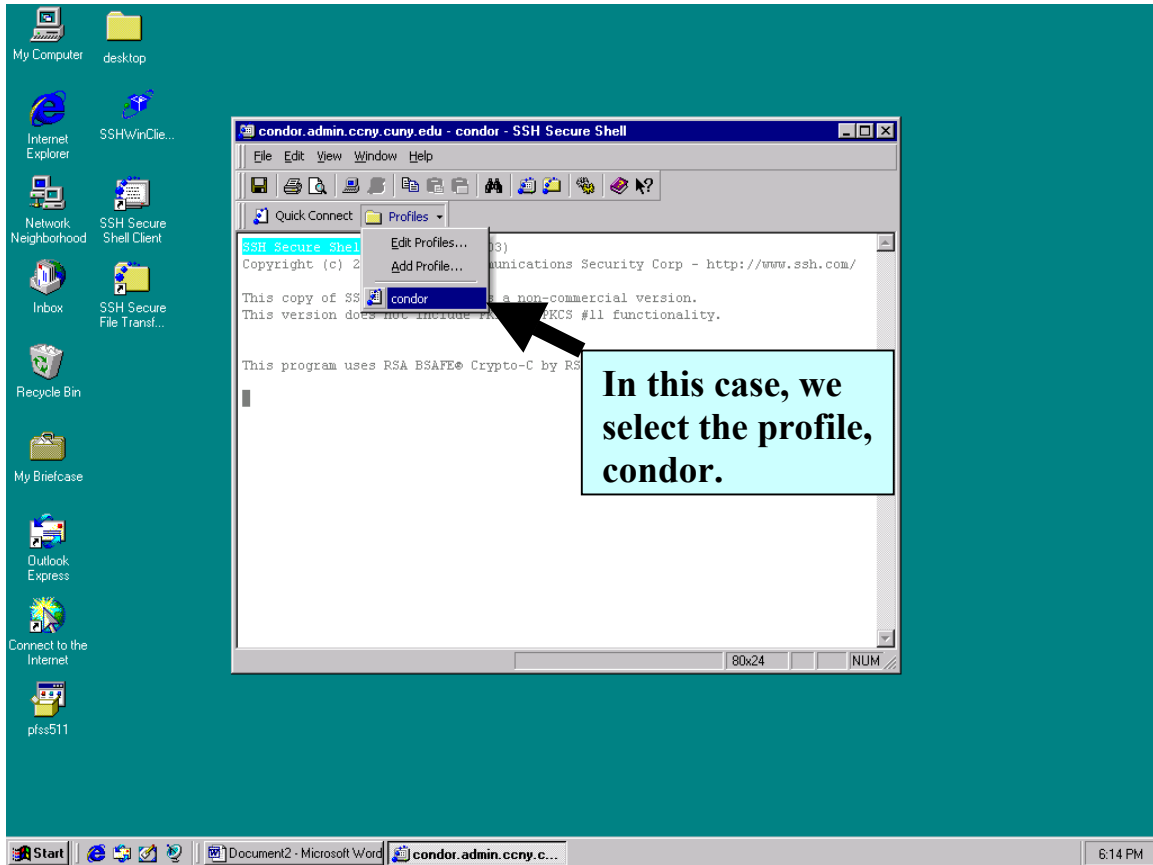
Post Number: 22

Keep the rest of the information as it is.

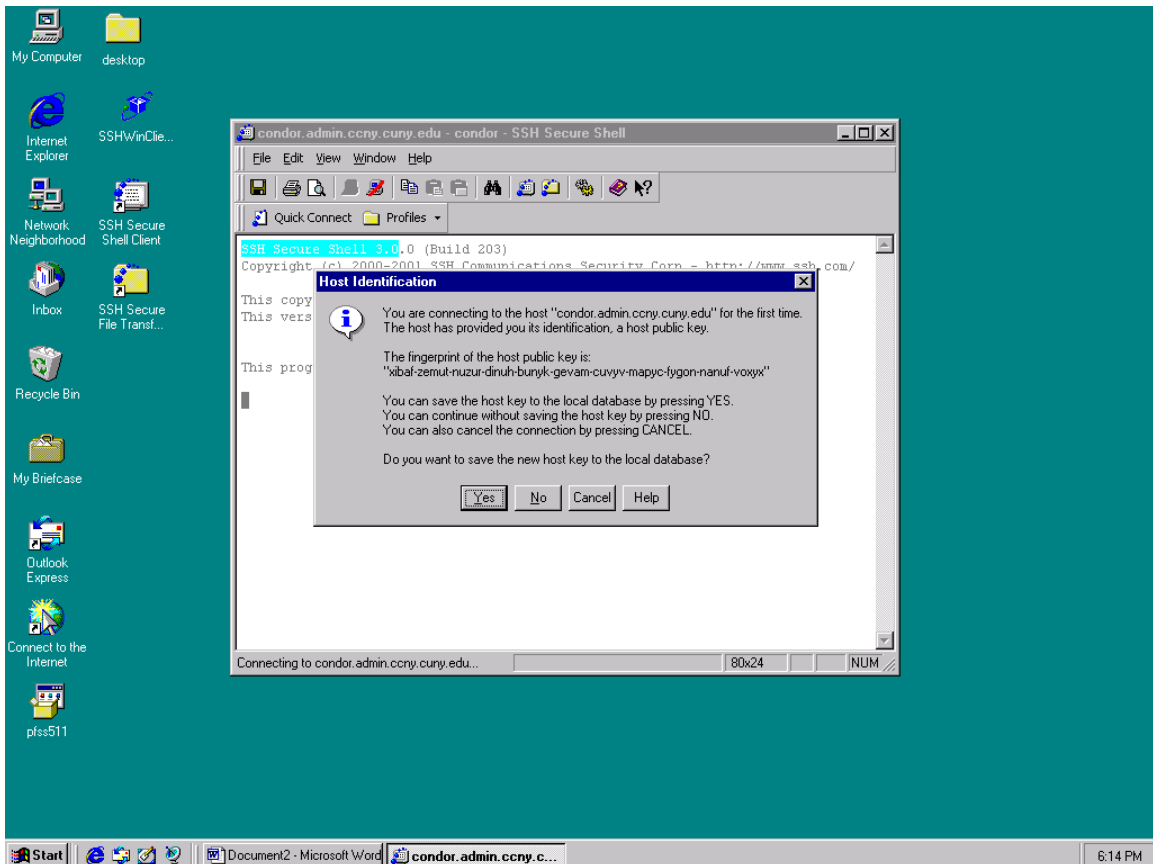
Click the OK button when you are done.



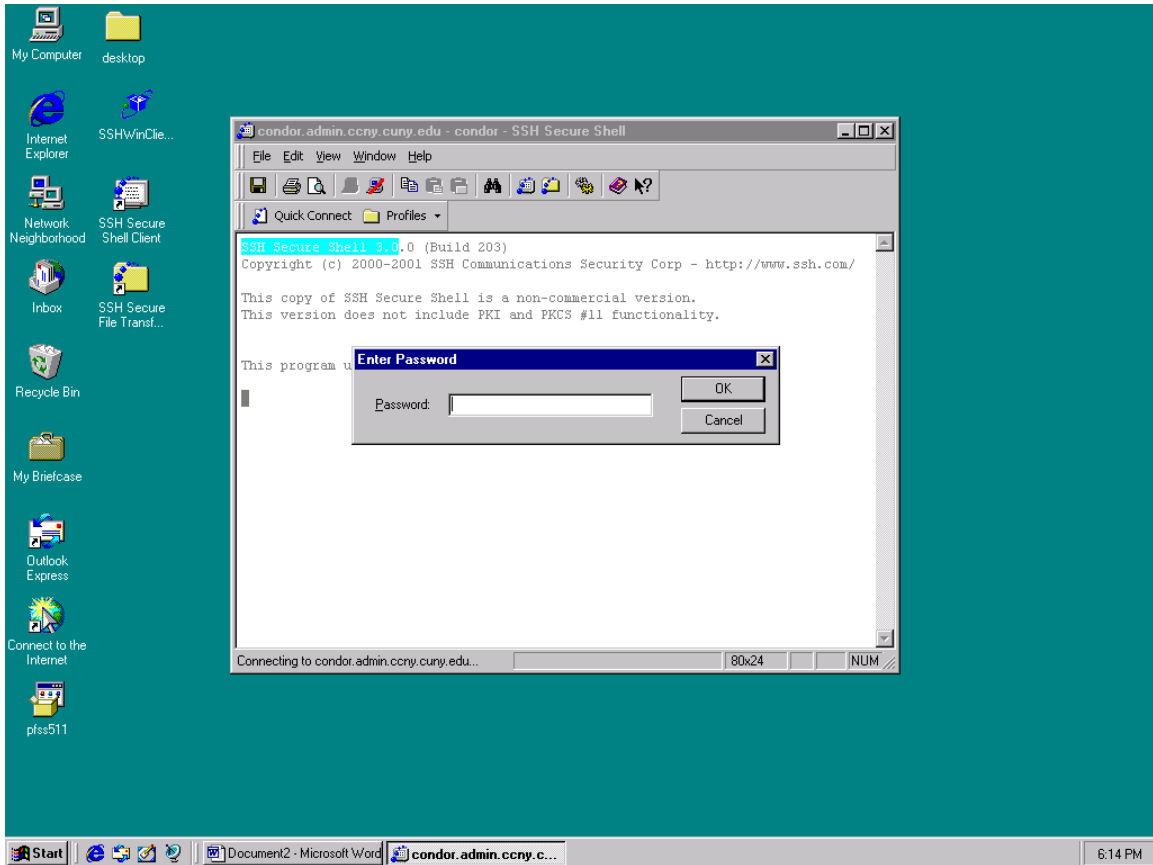
Now you are ready to connect to the server. Simply pull down the “Profiles” icon and select the profile you want to connect to.



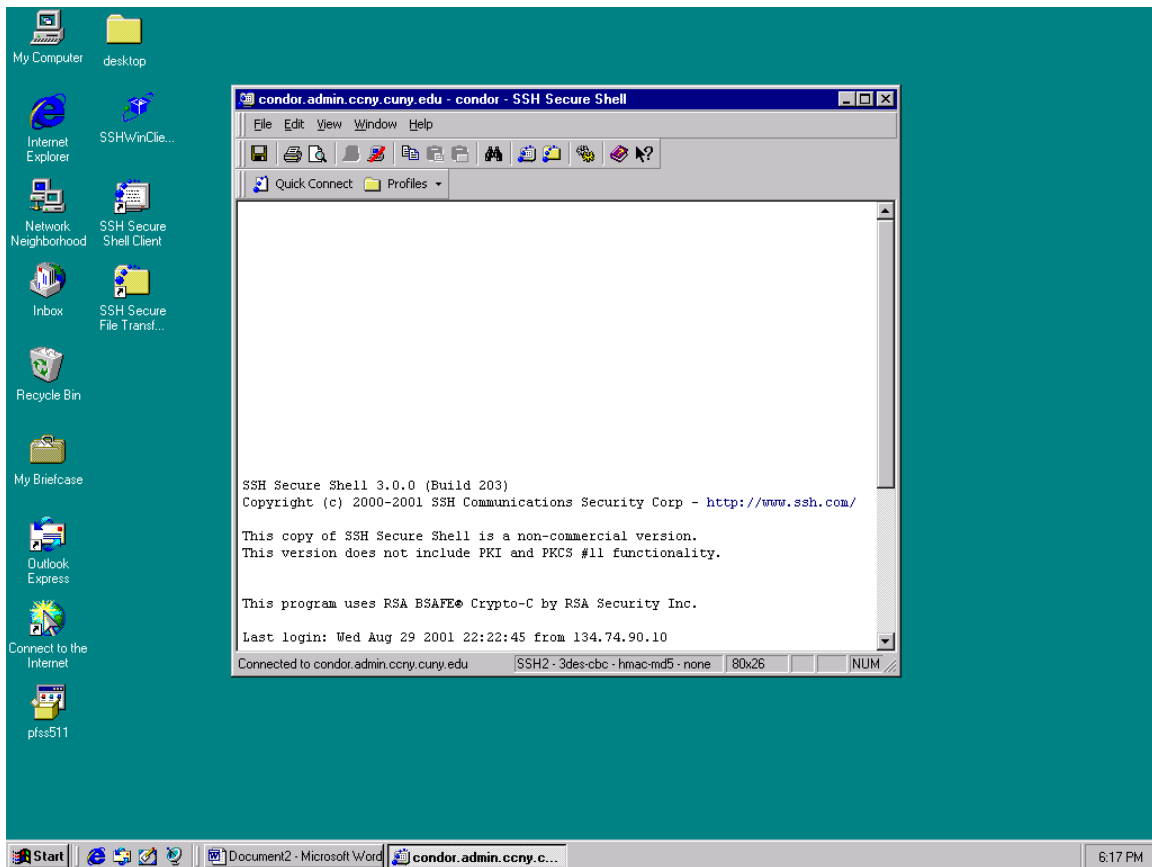
Click on the YES button when it is asking you about saving the new host key to the local database. This will only appear for the first time you connect to the server. Later, this window won't show again.



Enter your password (case sensitive) and then click on the OK button.



Now you are logged in to the server.

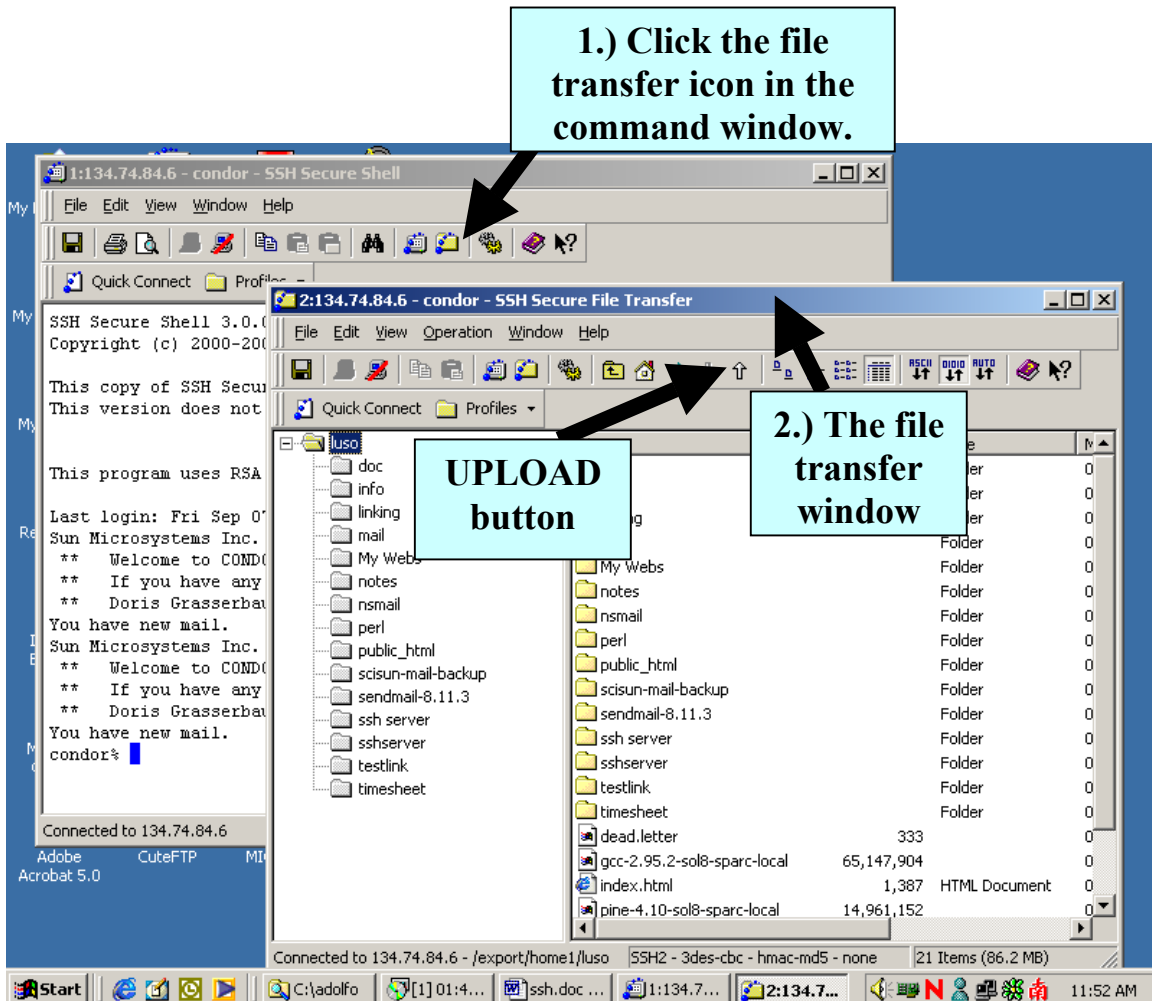


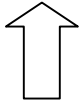
Transfer file by using the SSH client

Upload: moving files or directories from you local machine to the server.

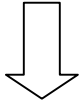
Download: moving files or directories from the server to your local machine.

To start transfer files: click the file transfer icon on the tool bar in you command window.
The second window will pop up, that is your file transfer window.





The UPLOAD button.

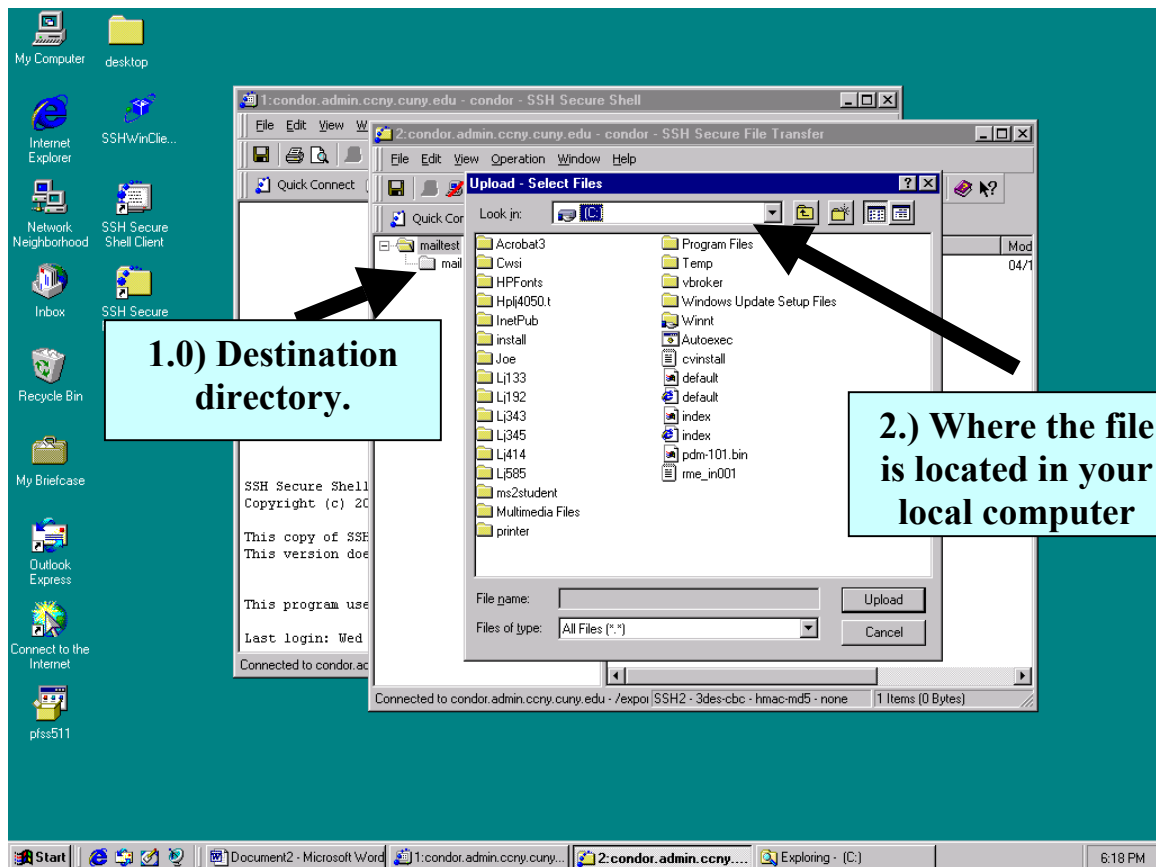


The DOWNLOAD button.

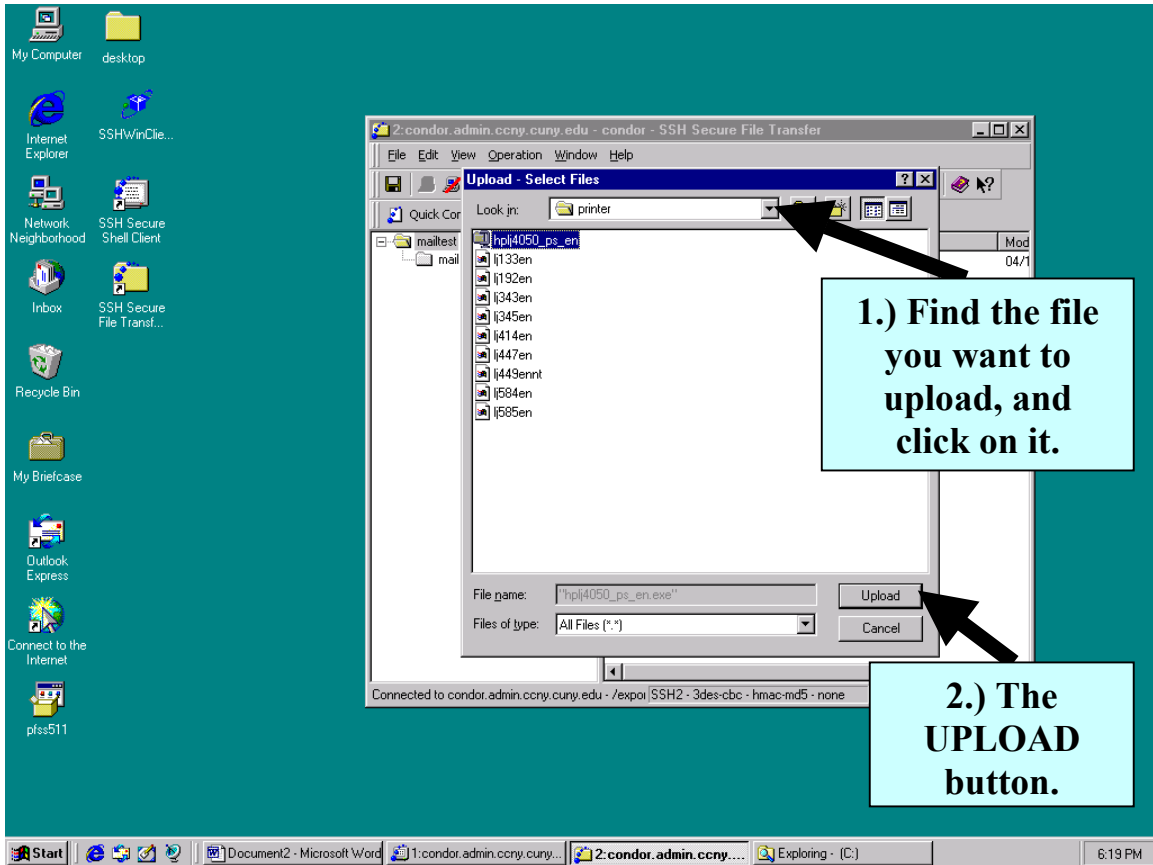
In this case, we want to transfer a file named: *hplj4050_ps_en* from your local computer's *C:\printer* directory to your server's *mailtest* directory.

First, at your file transfer window double click to the place that you want files to be transfer to.

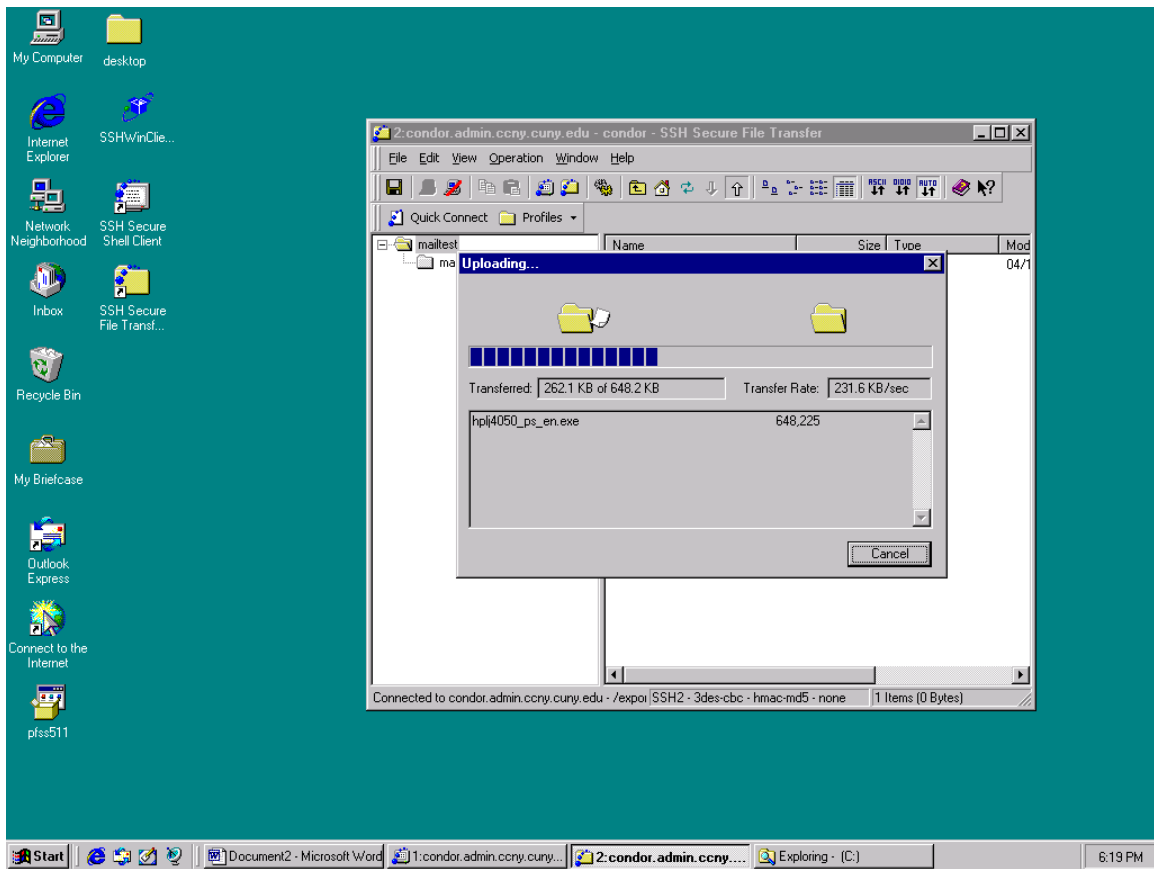
Second, click the UPLOAD button on the tool bar, then your C drive window will pop up.



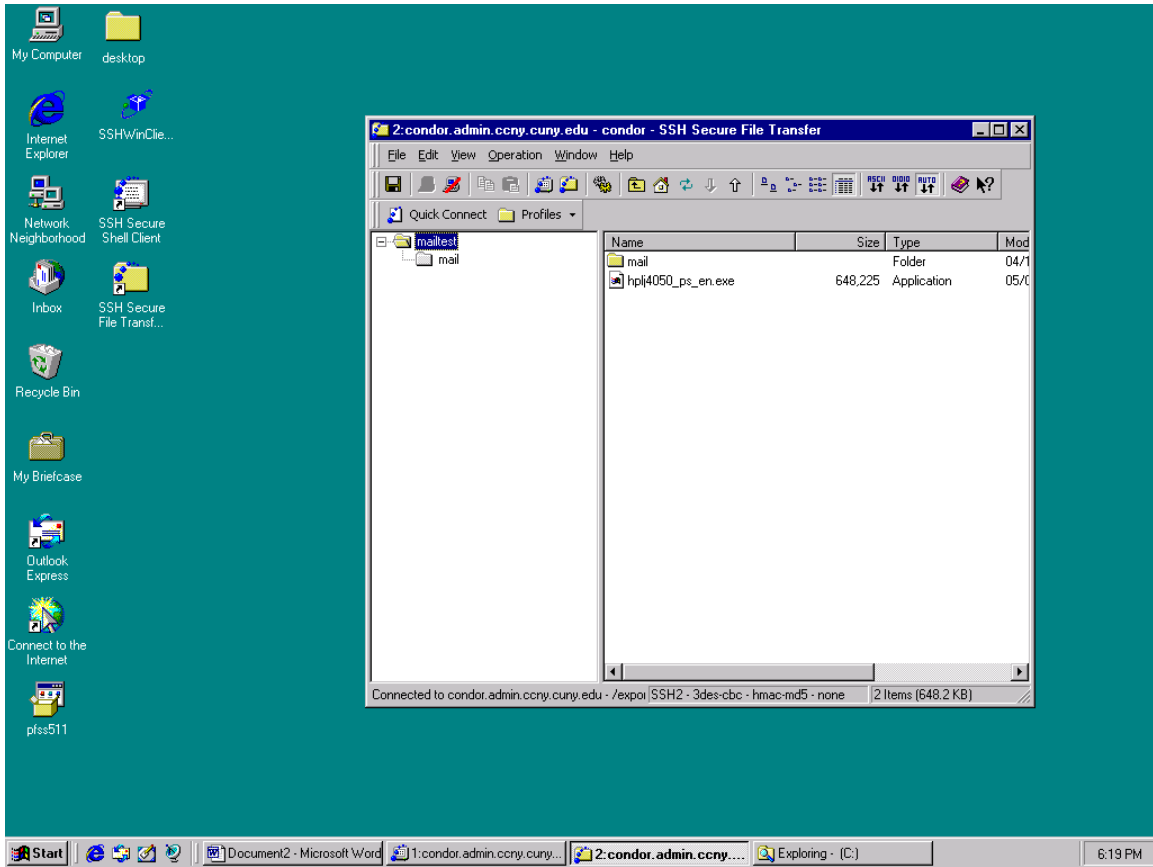
Select the right path where your file is stored in your machine, in our case, *C:\printer*, and highlight the target file; then click the **UPLOAD** button.



Now, the file is transferring. It may take quite a while depends on the size of your file.

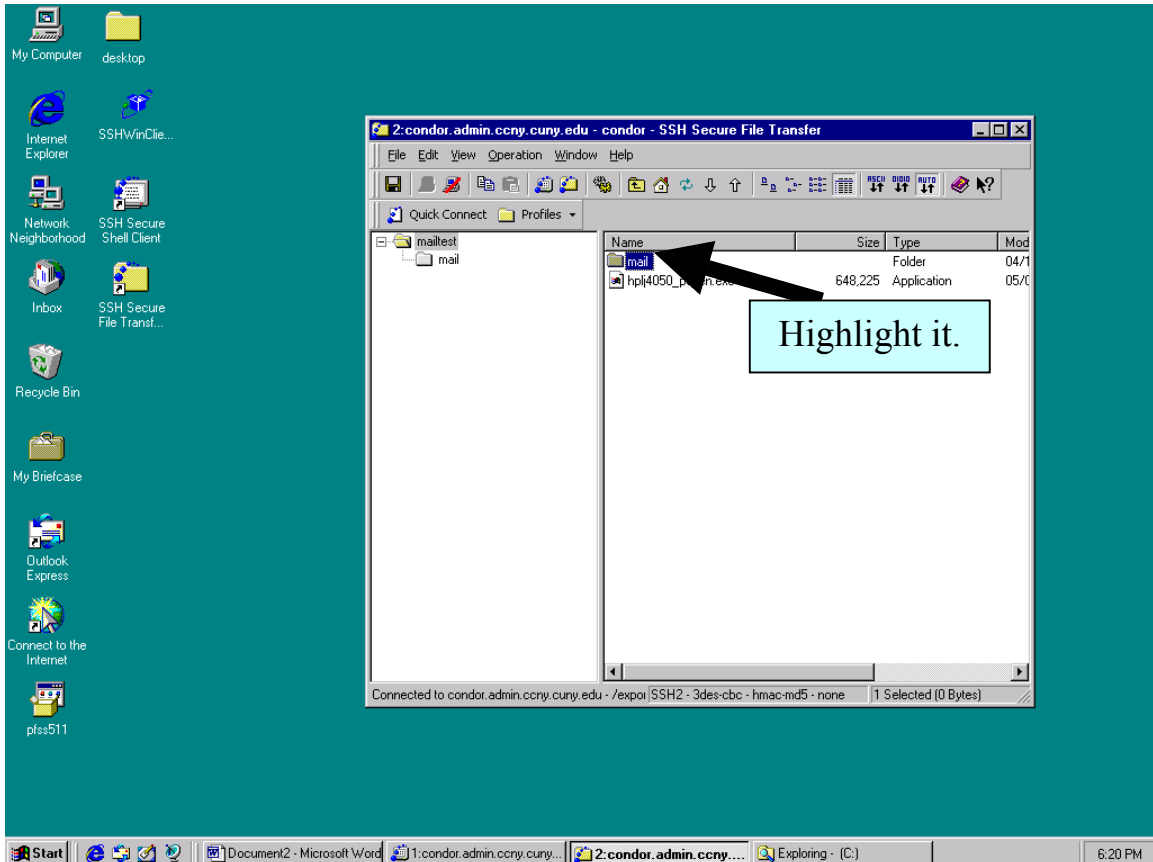


Once the transfer is done, the upload window will be gone. At your file transfer window, you can see the file is list on your server side; in this case it is under *mailtest*.

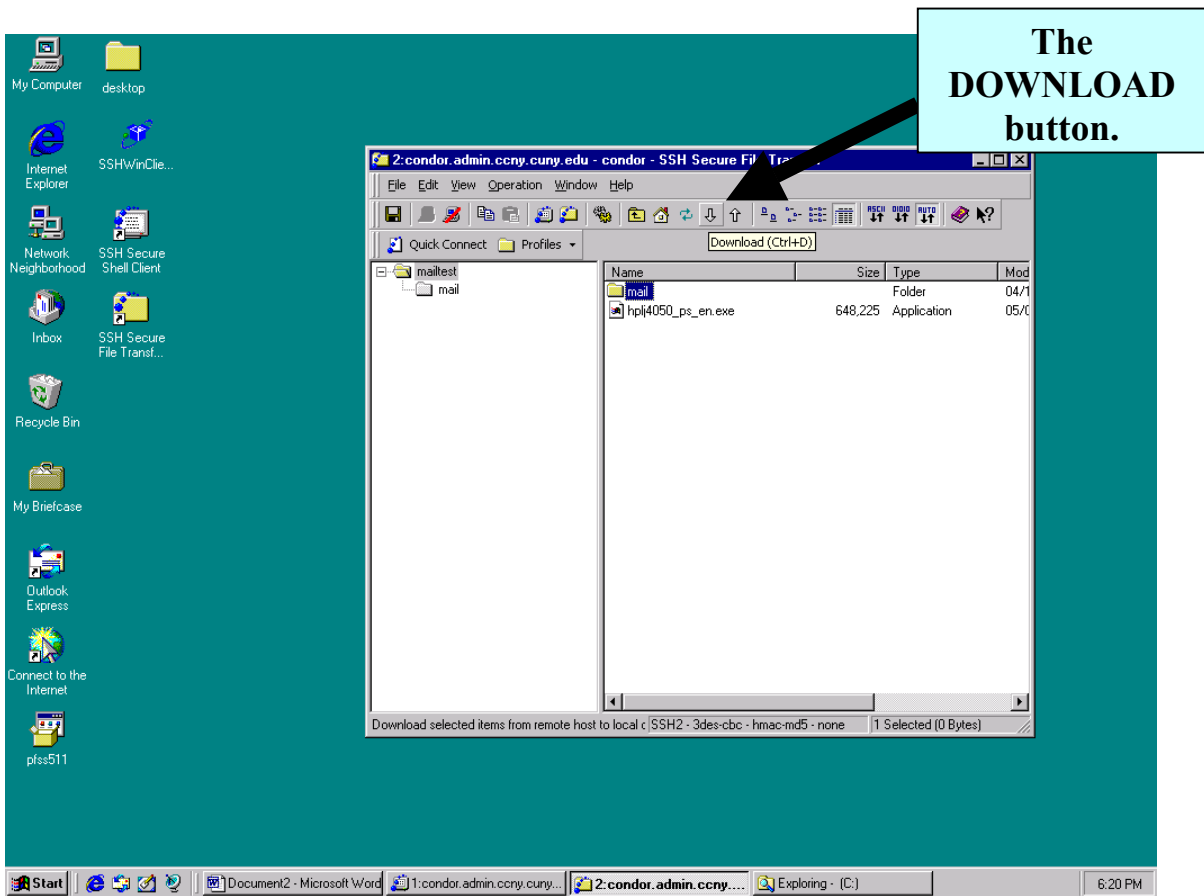


Now we want to do download. We want to download a folder/directory, *mail*, from the server side to your local machine in *C:\download*.

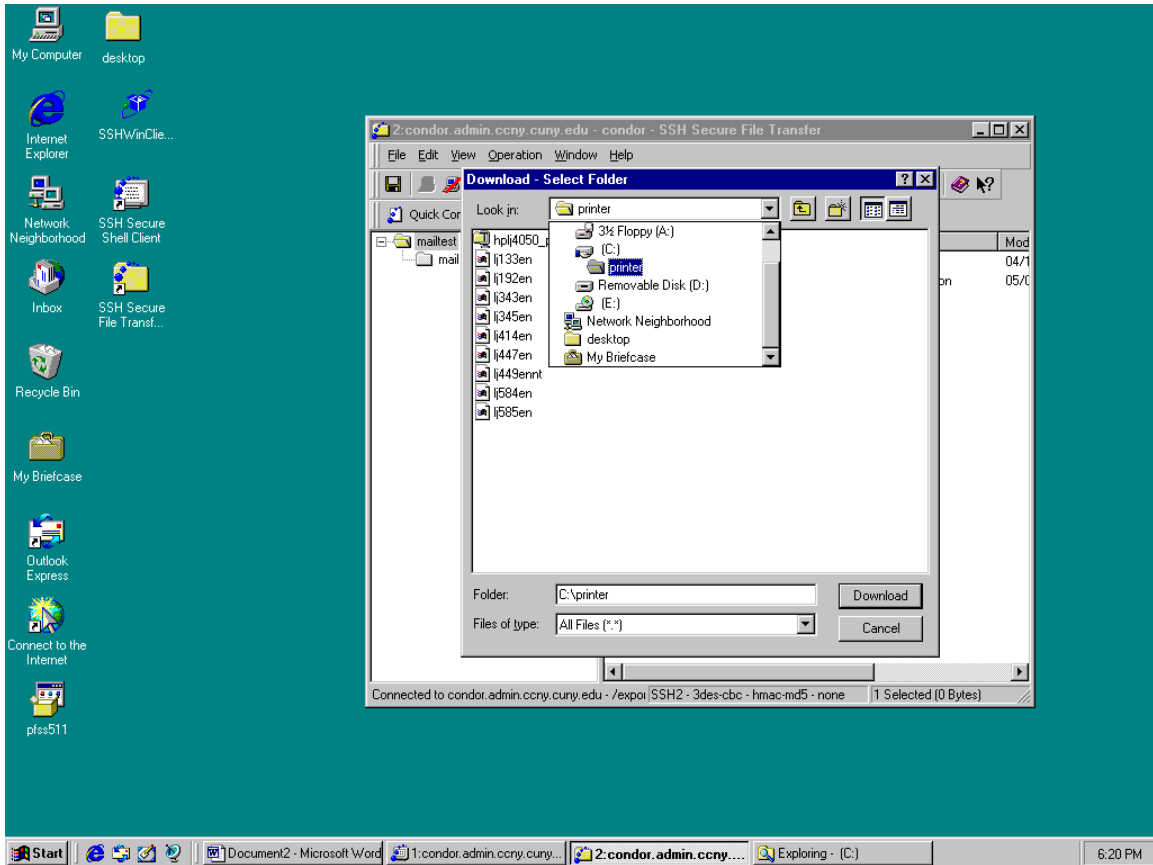
Highlight the *mail* folder in your server side's file transfer window.



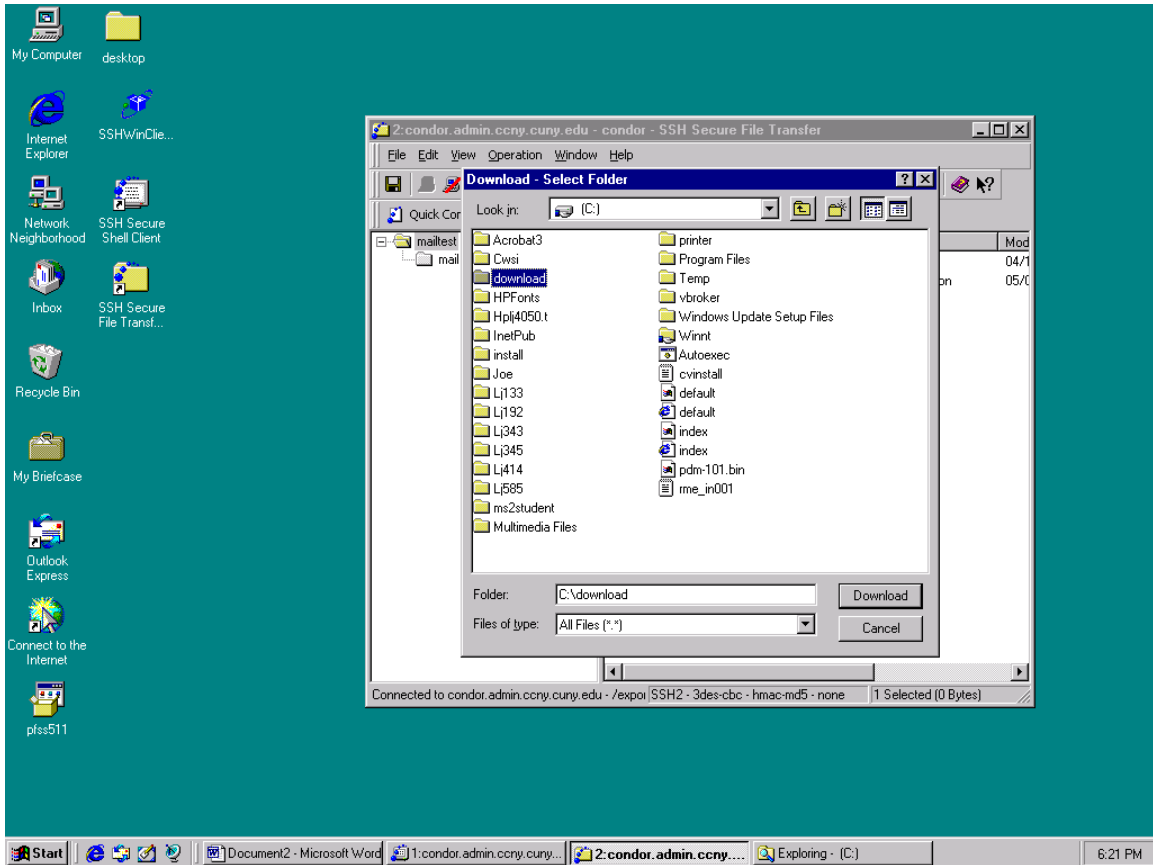
Click the DOWNLOAD button on the tool bar.



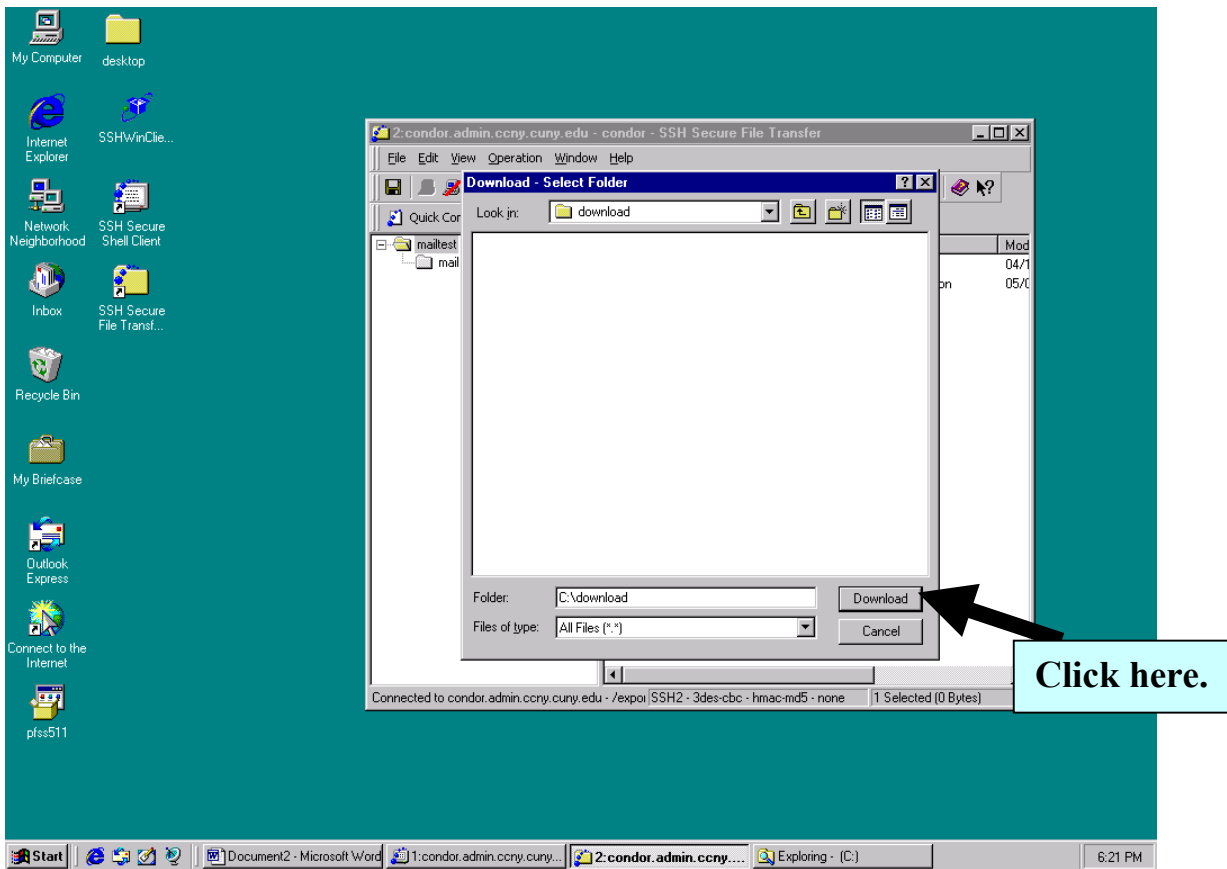
The DOWNLOAD window will pop up and click on the path that you want files to be transferred to.



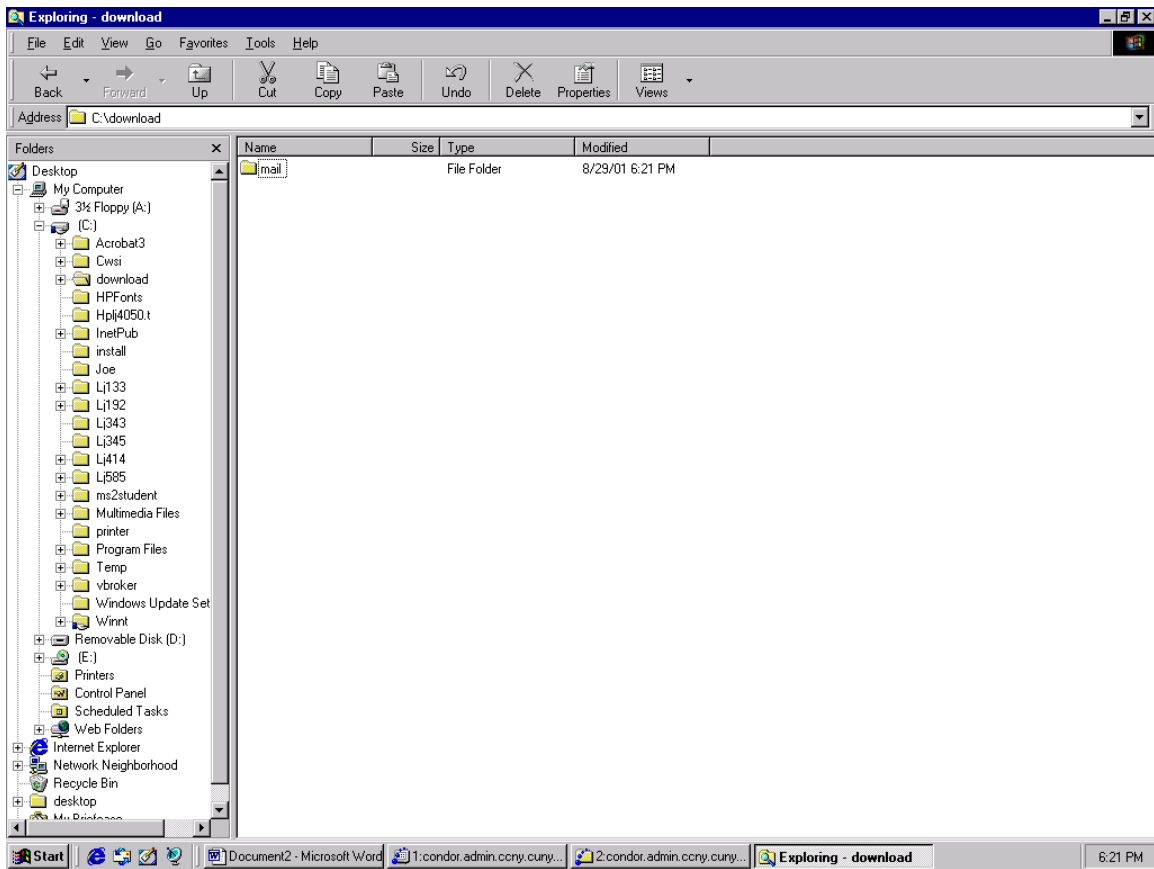
Double click the *download* folder in C driver, where the *mail* folder will be transferred into there.



Click the download button.



The *mail* folder is downloaded to your local machine's *C:\download*.



If you want to terminate the connection, now go to the command window and type in **exit** to end the program.

